



On the RIVER

Connecting ALVA Florida NEIGHBORS and NEIGHBORHOODS



About the editor:

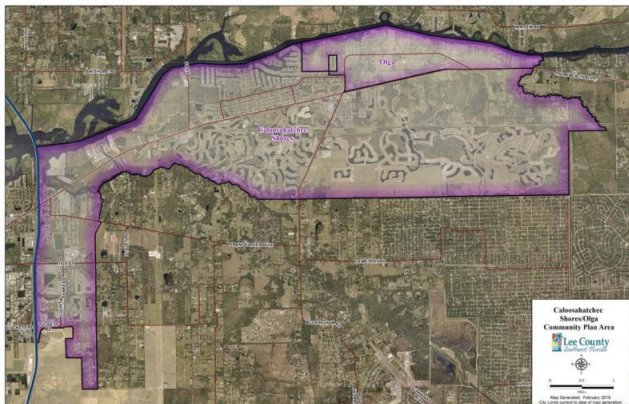
Ken DeWalt and wife Mona have lived in Oak Park, Alva since Christmas, 2014. They enjoy travel, history, reading, movies, and learning about our community by being involved in it.

Send posters, photos (jpegs only) or articles of 500 words maximum you would like to see printed or contact the editor with any questions, Ken DeWalt, kendewalt1@gmail.com

The deadline for receipt of any materials is the 15th of the month previous to the month you wish the articles to run. Issues go out before the 1st of each month. I do not take advertising at this time. Please understand that all articles are subject to available space and editor's approval.

Caloosahatchee Shores (Olga-Riverdale-Fort Myers Shores) Visioning Meeting

was held on Saturday April 13, 10 am-12pm at the Olga Community Center



The visioning workshop defined and updated the community planning goals for Caloosahatchee Shores within the Lee Plan. Lee County Community Development staff began by providing an overview of basic background information relevant to the Lee Plan, the community plans and the visioning event. After the short informational segment, guided group discussions intended to identify future opportunities and constraints within the Caloosahatchee Shores community took place.

An Alva DRIVING RANGE

and the new 'Transferable Development Units' in Lee County

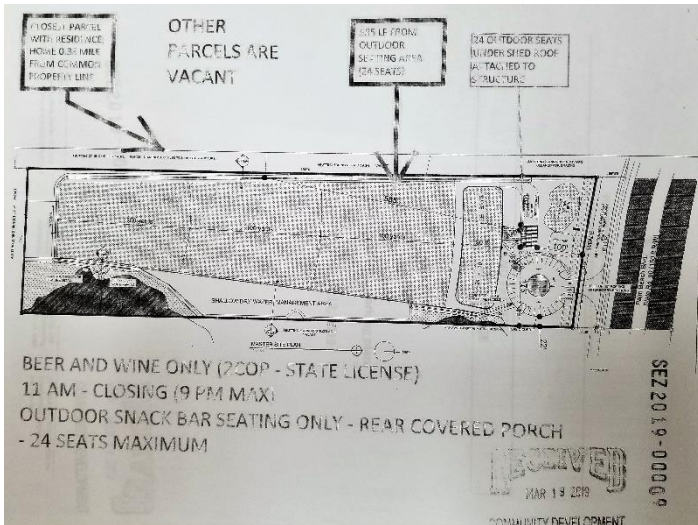
ALVA INC met at the Alva Community Center in their regular monthly meeting Tuesday night, April 9, 7 to 9pm to discuss several issues regarding development in our area.

Northeast Lee County Planning records that the BOLAND FAMILY GOLF DRIVING RANGE at **20440 Palm Beach Blvd**, request for a special exception to permit a

golf driving range (Commercial Recreation Facility, Group III) pursuant to Section 34-653 of the Land Development Code has not yet been approved as of this printing. This after a second 'Letter of Insufficiency' was sent April 4 by Lee County to the Boland's for not meeting planning expectations for the site.

Paul and Diana Boland of 14555 Indigo Lakes Circle, Naples, began the process of application for this project in 2017.

Michael Fernandez is the architect of record for the driving range.



TDU's

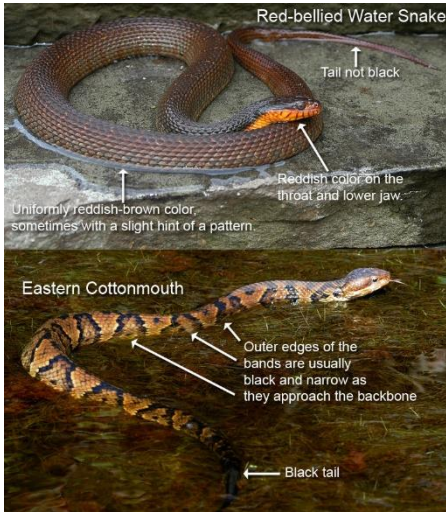
A somewhat unique way to encourage land owners to KEEP ALVA RURAL, as well as create development opportunities elsewhere in Lee County is part of the NORTHEAST LEE COUNTY Plan.

A Transferable Development Unit (TDU) equals one five-acre section of an owner's property if preserved woods or wetlands. A Rural TDU equals one acre of upland as defined in section 10-1 of NORTHEAST LEE COUNTY PLAN.

This means that a landowner may sell development units from her property to another, OUTSIDE of the Northeast Plan Area, if they agree never to further develop the land their units represented.

Further information may be found at

<http://www.leegov.com/bocc/Administrative%20Codes/AC-13-5.pdf>



Kimberly Diaz, Fort Myers Shores via NEXTDOOR ALVA

water moccasin vs plain water snake

Useful video details how to tell the difference between a plain, nonvenomous water snake and a venomous water moccasin or cotton mouth. Water moccasins are members of the pit viper family, and get their name from their shockingly white mouth, which they will curl up and display when they feel threatened. Most plain water snakes will scoot off into the water as you approach, a moccasin will likely stay curled. For more info, here's the address to the video. 🕒 it's nearly that time of year so be vigilant.

<https://youtu.be/oh-VAXeMAUI>

Will Jones, Fort Myers Shores via NEXTDOOR ALVA

Lee county Domestic Animal Services

Hello neighbors, my name is Will I am a Lee County Animal control officer. Been seeing alot of canines running loose on our area. I live here in the shores. If a canine is running loose to you having a unclaimed friendly companion. Contact Lee county Animal services. At (239) 533-7387.

We can scan for a microchip to running a rabies tag to get the canine back home.

If you have any questions feel free to contact me. I will be more than happy to answer any questions and educate you in any way possible.



Happy and Sad at Pearl & Broadway Streets in Alva

For several months now one of Alva's settler descendants, Nancy Daniels, has been refurbing one of our original near 100-year-old homes. To the left you see it as



it was on April 12th when I was stopped, not by the appearance of the near completed historic home, but by the end of a historic, maybe 200-year-old Kapok tree just across Pearl street.

The tree was healthy, and when it blooms a brilliant red it is gorgeous, but truth be told these trees are nasty neighbors. Huge amounts of cotton boll like seedlings fill the ground beneath and around all Spring, and the dead flowers are an icky mess to have to rake up. And then there are leaves. I was told the owners are too old to care for it, and it had to come down. It is and will be missed.



Services available for all of ALVA at Charleston Park Community Center

2541 Charleston Park Dr. Alva, FL 33920

-Goodwill INC Joblink available during office hours (job search and resume services).

-Food Pantry Every 4th Thursday at 10am-2pm (if you work during these hours please call to receive at another time and make an appointment so we can get you food as well).

-TOP (Teen Outreach Program) every Thursday @ 6pm 6th -12th grade only.

-Basic Learning Skill Tutoring Program for grades K-12 (come to the center and get your kids registered. Space is limited).

-All are welcome to attend our Neighborhood Association mtgs the second Monday of each month at 6pm.

-Tutoring for all ages available Mondays and Wednesdays at 5:30pm.

-30-minute LOW IMPACT aerobics class Monday & Wednesdays 1pm.

-Adult COOKING CLASS twice a month on Monday, 1:30pm.

-Youth Cooking Matters Nutrition Class twice a month on Mondays at 5pm.

-Restart of the Charleston Park Community GARDEN. Call to volunteer.

-TRUST MATTERS financial training coming to Charleston Park soon.

-FREE Southern Breakfast for all ages every 2nd Friday of the month, 9:30 to 10:30am. Take out available.

-And so much more! Keep your ears and eyes open for what's coming next.



Habitat for Humanity in Charleston Park

Park, and now they have come to begin your journey to becoming home for the

9 ready to build on LOTS AVAILABLE IN CHARLESTON PARK

Be sure to put the words CHARLESTON PARK at the top of your application.



owners



Charleston Park Community Center is building a new

CHILDREN'S & YOUTH LIBRARY

Ramona DeWalt, wife of the ON THE RIVER publisher, Ken, has 22 years' experience in managing departments in Border's Book's and her own GENTLY USED BOOKSTORE in PA.

You can help her develop this new library of new and as-new books by donating funds or books directly to her, or through the new Charleston Park GOFUNDME website here:

<https://www.gofundme.com/charleston-park-alva039s-children-amp-youth-library>

ALVA INC

Striving to Keep Alva RURAL

www.alvafl.org

We meet every second Tuesday of the month at 7pm at the Alva Community Center.

We discuss items pertinent to our community, families, schools, and homes.

Join us to learn what's happening, and how you may be a part of what's happening as Lee County Grows eastward toward our country haven.

One of Alva INC's professional sponsors: **COUNTRY CARE PET SITTING, 863-610-1607**



Six Mile Cypress Slough, Lee County Park

7751 Penzance Boulevard, Fort Myers, FL 33966

A Slough is a long, narrow wetland with slowly flowing freshwater. The entire Preserve is over 3,500 acres of intermingled wetland and upland ecosystems. The appearance of the Slough changes with the seasons from dry (October-May) to wet (June-September). During the rainy time of year, the Slough catches and slowly filters rainwater on its way towards Estero Bay. Animals adapted to life in wetlands, like alligators, turtles, otters, and wading birds, live at the Slough year-round. Additionally, many types of migratory birds use the Slough as a rest stop and feeding area.



Manatee Park, 10901 Palm Beach Blvd, Fort Myers, FL 33905

The park kayak launch is closed for the season but there is an alternate launch at the park with direct access to the Orange River. This launch is open to the public with paid parking. You will need to walk your paddlecraft about 390 ft to access this location. The launch closes daily at 4:30 p.m. Few manatees are seen as the weather warms up.

Pavilion, Chickee Hut & Amphitheater Rentals are available to rent. Call (239) 690-5030 ext. 222 or email HGienapp@leegov.com for reservation information. Picnic areas are available first come, first serve.



Olga Community Park

2325 S Olga Dr, Fort Myers, FL 33905

(239) 533-7275

Summer Day Camp coming in June



Hickey's Creek Mitigation Park

17980 Palm Beach Blvd, Alva, FL

33920



Great for quiet creek kayaking.

Fun for walks and picnics.

A pond overlook.

W.P. Franklin Lock & Dam South Recreation Area

Franklin Lock Rd. , Alva , FL 33920. Contact: (239) 694-2582

Visitors flock to W.P. Franklin Campground for its well-kept facilities and location on the Caloosahatchee River, where campers can fish, boat and take it easy in sunny southwest Florida. The campground, about 10 miles east of Fort Myers, provides visitors with a taste of tranquil, tropical country life. Nearby Telegraph Creek, offers exciting opportunities to canoe Florida's backcountry swamps and view wildlife.



Lock usage: Operating hours 7 a.m. to 5 p.m., 365 days a year, unless otherwise noted in the Coast Guard published, "Notice to Mariners." Lockage usually takes 15 to 20 minutes.



ALVA BOAT RAMP PARK

21580 Pearl St, Alva, FL 33920

Coming, possibly as soon as August, a refurbished and enlarged boat dock and ramp area.

Parking will still be a challenge in season on weekends.



Alva Community Center PARK

21471 North River Road, Alva, FL 33920 , (239) 728-2882

Three of the many activities here:

"Club Rec" After School Program , Girl Scouts ,Community Meetings



Caloosahatchee Regional Park

19130 North River Road, Alva, FL 33920 (239) 694-0398

EMAIL: leeparks@leegov.com

7 a.m.-7 p.m. Daily: Campground Gate (parking lot #1) remains open until 10 p.m. on Friday and Saturday nights (from September through May).

NORTH FORT MYERS Recreation Park

2000 North Recreation Park Way

North Fort Myers, FL 33903



Disc Golf Course

This park features an 18 hole Disc Golf course For more information call (239) 297-8916.

League Partnerships

Pop Warner: (239) 997-4900

Babe Ruth Baseball: (239) 995-7011

Shuffleboard: (239) 997-2797

Veterans Park Recreation Center

55 Homestead Road South

Lehigh Acres, FL 33936



Paws 4 Duty Dog Park

This dog park features two off-lead play areas for small/shy and large dogs. Please remember to clean up after your pet. The park features water and shower stations for our canine friends to use while they exercise and socialize.

Mosquito Control Service Request:

What kind of activity are you seeing regarding mosquitoes in your area? Submit a service request if you are seeing them in your area. We pay good money for this service so let's use it! –

Paul Harper , in NEXTDOOR

https://lee.leateamapps.com/map/mv_public_map

Fort Myers MEALS ON WHEELS wants to begin their wonderful service to homebounds of any age in ALVA!



NEW DRIVERS:

At Alva UM Church on Pearl St., the 14th of May, 10 am folks from Meals on Wheels will answer questions, and educate new drivers. Drivers need to bring their license and insurance card.

**NOW taking applications from recipients of meals.
Contact ROSE, see below>>**



Our caring Meals on Wheels volunteers provide daily, nutritious

home-delivered meals and a friendly, safety and security check to eligible homebound neighbors who cannot shop or cook for themselves. These neighbors include seniors, the disabled, or chronically ill adults under the age of 60.

To become a volunteer driver/deliverer to clients, or to become a client receiver of meals and other services, please contact:

Rose Goree-Lawrence, Admin. Asst., PO Box 2143, Fort Myers, FL 33909 or call her at 239-337-1055 or email her at Rose@CommunityCooperative.com

Some of our local ALVA churches:

□
St. Vincent DePaul's RC Church

13031 Palm Beach Boulevard, Fort Myers, FL 33905

www.stvincentftmyers.org

239-693-0818

Alva United Methodist Church

21440 Pearl St. P.O Box 96

Alva, FL 33920

Alvamc@embargmail.com

239-728-2277

Alva Church of God

21520 Park St, Alva, Florida 33920

239-728-2644

Liberation International Church

Avenue D, Charleston Park

Alva, FL 33920

239-601-4870

First Spanish Assembly of God Church

2219 Joel Blvd, Alva, FL 33920

239-728-5440

Countryside Wesleyan Church

17750 Palm Beach Blvd, Alva, FL 33920

239-368-3270

Calvary Church

19850 Palm Beach Blvd

Alva, FL 33920

www.calvarychurchswfl.org

239-728-5566

First Baptist Church of Alva

2790 Joel Blvd, Alva, FL, 33920

www.alvabaptist.com

239-728-2034

St. Vincent DePaul RC



Our Lady's Cupboard Food Pantry

Breakfast cereal and canned fruit continue to be needed in Our Lady's Cupboard Food Pantry. Many of the families we provide assistance to have children of school age and they need a nutritious start to the day. If you are able to help us and provide a donation, please try to keep in mind the Food Pyramid.

ALVA UMC

Food Pantry @ Bethany House

Food Pantry: 9am-12pm 1st & 3rd Wednesdays

Bread Pantry: 8am-10am 2nd & 4th Wednesday



Thu, May 2, 2019 7:00 PM – 11:30 PM EDT

The Prayer & Purpose Center

1102 Leeland Heights Boulevard East, Unit 4,

Lehigh Acres, FL 33936

A bit of ALVA History

Spanish / Cracker Cattle Here?

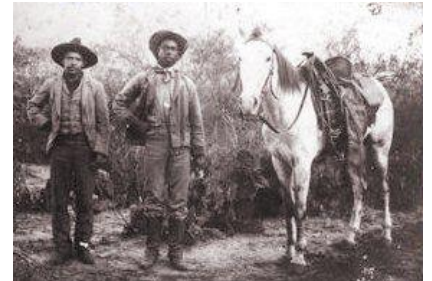


When Juan Ponce de Leon arrived on his final mission to Florida in 1521, he brought Spanish Andalusian cattle with him to help provision the growing settlement he hoped to establish on Florida's Gulf coast. Calusa Indians attacked the would-be Spanish colonists, and they were forced to retreat to Cuba and leave many of their supplies behind.

No records exist to explain just what happened to the cattle, but it's possible some of them survived and remained in the wild. If this didn't get the herd started, the larger Spanish settlements at St. Augustine, and down the Atlantic coast certainly did.

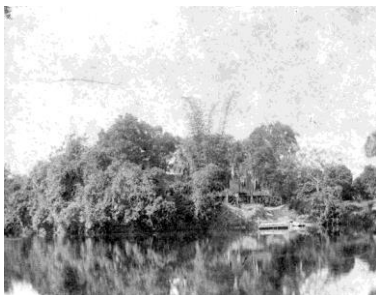
More andalusian cows arrived through the 1500's. Unfenced, they wandered at will in the woods to graze until they were rounded up. Brands were used to keep each owner's cattle separate. The system worked, although years of conflict between the Spanish, Native Americans, and British settlers from the north acted to scatter the herds across the peninsula.

The Spanish hold on Florida began to unravel in the 18th century, and new inhabitants began tending the cattle roaming around the region. Years of free range living had toughened the herds, making them less vulnerable to parasites and better able to tolerate life in areas with less than an ideal food supply.



Native Americans began using the cows as an auxiliary food supply.

When U.S. settlers began arriving in the area, they bought (or took) scrub cows to improve their own herds. As the 19th century progressed and the Seminoles were forced farther south, the open range herds they had once tended came increasingly under the control of these newcomers.



Here in Alva our first settlers grew their town up around cattle and the river. The first product ferried across the Caloosahatchee was not vegetable or mineral, it was CRACKER. Called a cracker cow because the cowboy or girl cracked their woven hide whip in the air above the right or left ear to turn them when driving through the flats and marshes of our Southwest Florida savannah.

Cows and riders drove south from as far away as above Lake Okeechobee to the crossing at what we now call Broadway Street. Yes, Alva was a serious COWTOWN, not unlike Arcadia, to our north.

And from here they were cracked south all the way through the dirt streets of the still small town of Fort Myers, and down to Punta Rassa, where they were put on ships to be sold in Havana, Cuba.

TY www.floridamemory.com For fun....GOOGLE **The Confederate Cow Cavalry** to learn more about our Cracker Cattle.



JUST BE KIND

Have you noticed the occasional "Just be Kind" sign catching your eye along our roadways? Polly Kiely of Alva was inspired to begin an Alva sign movement when she learned of a Central Indiana youth project started in 2015. The message is a gentle reminder that may impact positive interactions with others and lift one's spirit. Kindness is contagious, and something we can all benefit from. For more information, Google "Just be Kind".

The origin of the **JUST BE KIND** sign movement:

<https://fox59.com/2018/08/08/just-be-kind-movement-spreading-worldwide/>

To find out more about Polly's local efforts and how you may become a part of them contact Polly at: pbkiely@embarqmail.com



ALVA GARDEN CLUB NEWS

<http://www.fmlcgardencouncil.com/council-directory/102/alva-garden-club/>

A visit worth your time!

The ALVA MUSEUM

in the historic Alva Library Building,

one of the oldest library buildings in existence
anywhere in Florida

Grand Re-Opening is COMING!



DISCOVER

what the author of FLORIDA BACKROADS TRAVEL has to say about our community

<https://www.florida-backroads-travel.com/alva-florida.html>



SOUTH FLORIDA HOMELAND SECURITY
Reprinted from Funny Times / PO Box 18930 / Cleveland Hts. OH 44118
phone: 216.371.8600 / email: f@funnytimes.com

Household Yard Waste that Includes:

- Leaves
- Brush
- Grass clippings
- Palm fronds



To Legally Burn Yard Waste Without an Authorization, You Must:

1. Confirm with your local fire department that no local or county ordinances prohibit such burning.
2. Ensure your fire meets the required setbacks.
3. Ensure your fire is in a noncombustible container or a pile less than 8 ft. in diameter on ground cleared of combustible material.
4. Ensure your fire is attended to at all times.
5. Ensure your fire is started after 9:00 a.m. and out by at least 1 hour before sunset.
6. Ensure adequate fire extinguishing equipment is available at all times.
7. Ensure smoke is not a hazard or nuisance.

ALVA FIRE CONTROL & RESCUE SERVICE

2660 Styles Road, Alva, Florida 33920

(239) 728-2223



At the April Commissioners meeting the Alva Firefighters and the Chief were presented with Badges that were donated by the Crittenden Family, local business owners & Alva residents. Well-deserved kudos to Casey Gee (photo to left) and the other Heroes that are part of the Alva Fire Control & Rescue Service District!



well-deserved kudos to Casey Gee (photo to left) and the other Heroes that are part of the Alva Fire Control & Rescue Service District!



The Annual **CHARLESTON PARK DAY**, April 27th, Festival was **FULL FILLING!**



Your RIVERDALE LIBRARY



Location:

2421 Buckingham Road

Fort Myers, FL 33905

Directions to Riverdale Branch Library



Hours:

Tuesday (Noon-8 p.m.)

Wednesday and Thursday (10 a.m.-6 p.m.)

Friday and Saturday (9 a.m.-5 p.m.)

Contact: 239-533-4370, Branch Manager: Alyssa Diekman. Closed Sundays and Mondays



Experience Virtual Reality at the Library!

May 28th marks the first day of Summer Reading at the library and this year's theme is A Universe of Stories. To celebrate, the Riverdale Branch Library will be hosting several opportunities for patrons to expand their own universe with exhilarating virtual reality using the Oculus Rift* headset.

Hands-On with Virtual Reality: Google Earth VR, Friday, May 24, 2-4pm

Hands-On with Virtual Reality: First Contact, Thursday, May 23, 2-4pm, Saturday, May 25, 12-2pm

Get hands-on experience with immersive virtual reality using the Oculus Rift and Google Earth VR. Fly over and through exotic locations around the world or take a street-level walk through distant cities. Get answers to any questions you may have about this emerging technology and enjoy an engaging conversation about the future of information and entertainment.

It is recommended that those with no prior VR experience attend a First Contact program before attending other Hands-On with Virtual Reality programs at our library. Registration for this program is recommended, but not required. Drop-ins are welcome, but cannot be guaranteed hands-on experience. Registered participants will be guaranteed hands-on experience on a first-registered, first-served basis.

For more information or to register, please visit <https://leelibrary.librarymarket.com/> or call us at 239-479-4636.

*Due to manufacturer's health warnings for the use of the Oculus Rift, this program is not open to children under the age of 13.



Help keep your boat afloat and your gear in the clear

the Lee County Sheriff's Office Crime Prevention Unit encourages watercraft owners to follow these safety and security tips:

- * Make sure your craft is always kept in well-lit areas.
- * Remove valuable equipment from your boat when not in use.
- * Lock the boat's cabin, doors and windows when not in use.
- * Record all boat information such as serial numbers, ID codes, and the HIN (Hull Identification Number). Take pictures/video of your boat, trailer and equipment and consider marking your property with a unique identifier such as a zip code or house number.
- * Do not keep registration or title papers in an unsecured location on the vessel.
- * Install an alarm system and a kill switch in the ignition system.
- * Ensure your marine insurance policy includes your equipment, boat and trailer.

To learn more about boat theft and related fraud scams, and obtain a boat theft prevention

checklist, visit the National Insurance Crime Bureau at www.nicb.org. To speak to a Lee County

Sheriff's Office Crime Prevention Specialist, call 258-3280.

The image displays three screenshots of the COUNTABLE app. The first screenshot shows a public profile for 'BRAVENEWFILMS' with a mission statement and a list of followers. The second screenshot shows a 'KEEP TABS ON YOUR LAWMAKERS' screen for 'Rep. Speier', featuring a 'VOTES' section with 'YEA' and 'NAY' buttons and a 'SIGNATURE' section with a 'NAY' button. The third screenshot shows a 'SEE YOU SOON!' sign-up screen with the text 'KNOW THE ISSUES SPREAD THE WORD INFLUENCE CONGRESS' and a 'SIGN IN WITH FACEBOOK' button.

Download the COUNTABLE APP for your smartphone or PC/MAC and keep your government ACCOUNTABLE

**LEE COUNTY
EMERGENCY**

& SERVICE CONTACT INFORMATION

ACT-Abuse Shelter (Domestic Violence) 939-3112
 Addiction Services (Salus Care) 332-6989
 Alcoholics Anonymous 275-5111
 Ambulance (emergency) **9-1-1**
 Animal Services 533-3353
 Citizens Dispute (Mediation) 533-2885
 Chamber of Commerce SW Fla. 275-2102
 Child Abuse 800-962-2873
 Child Support Enforcement 877-769-0251
 Clerk of Courts 533-5000
 Code Enforcement 533-8895
 Clear Point Credit Counseling 278-3121
 County Commission 533-2259
 Dead Animal Removal 949-6246
 Division of Motor Vehicles 533-6000
 Dept of Transportation-County 533-8580
 Drug Abuse (Salus Care) 275-3222
 Economic Crimes Unit 258-3240
 Elder Abuse Hotline 800-962-2873
 Elder Helpline United Way 2-1-1
Emergencies 9-1-1
 Fraud Line (LCSO) 258-3287
 Health Department 332-9647
 Humane Society (Gulf Coast) 332-0364
 Lee County Transit (Lee Tran) 533-8726
 Mental Health (Salus Care) 275-3222
 Legal Aid 334-6118
 Libraries 479-4636
 Parks & Recreation 533-7275
 Poison Information Center 800-222-1222
 Probation Office (County) 533-9199
 Probation Office (State) 338-2349
 Public Defender 533-2911
 Red Cross 278-3401
 School Board 334-1102
 School Transportation/Bus Barn 590-4000
 Social Security Administration 800-772-1213
 State Attorney 533-1000
 Suicide Prevention Lifeline 800-273-8255
 Supervisor of Elections 533-8683
 Tax Collector 533-6000
 Veterans Services Office 800-827-1000

Lee County Sheriff's Office Headquarters
 14750 Six Mile Cypress Pkwy
 Ft. Myers, FL 33912 477-1000

North District Substation
 121 Pondella Road
 N. Ft. Myers, FL 33903 477-1810

East District Substation
 1301 Homestead Road North
 Lehigh Acres, FL 33936 477-1820

West District Substation
 15650 Pine Ridge Road
 Ft. Myers, FL 33908 477-1830

South District Substation
 8951 Bonita Beach Road #565
 Bonita Springs, FL 34135 477-1840

Bonita Springs Substation
 10520 Reynolds St
 Bonita Springs, FL 34135 477-1140

Central District Substation
 14750 Six Mile Cypress Pkwy.
 Ft. Myers, FL 33912 477-1850

Gulf Substation 282-5766

Lee County Jail (inmate information)
 2115 Dr. Martin Luther King, Jr. Blvd
 Ft. Myers, FL 33901 477-1500

Civil Process
 2072 Victoria Avenue
 Ft. Myers, FL 33901 477-1353

Lee County Gun Range
 6570 Felix Romano Avenue
 Fort Myers, FL 33905 690-3999

Community Relations 258-3280
Fraud Line 258-3292

Juvenile Assessment Center (JAC)
 2115 Dr. Martin Luther King, Jr. Blvd
 Ft. Myers, FL 33901 344-5100

**FEDERAL, STATE & LOCAL LAW
ENFORCEMENT**

Fort Myers Police 321-7700
 Cape Coral Police 574-3223
 Sanibel Police 472-3111
 Port Authority Police 590-4810
 Florida Highway Patrol 278-7100
 Federal Bureau of Investigations 337-7171
 Drug Enforcement Agency (DEA) 275-3662
 Fla. Department of Law Enforcement 278-7080
 Federal Government Info. Center 800/688-9889
 Fish & Wildlife Commission 863-648-3200



Lee County Refugee Center
 125 Gilbert Avenue South
 Lehigh Acres, FL 33973
 239-745-8401

Did you know we had a refugee center in Lee County?

Our Purpose

Advocate legal rights of individuals who flee their homeland for being victim of oppression, fear, mistreatment, and discrimination.

We make sure each and every Immigrant arrived on our shores is treated equally. Lee County Refugee Center supports them throughout the legalization process until they become able to vote.



Fight for the Light at SR31 and SR78

by: Josh Dorcey

Location: Alva, FL

145 SUPPORTERS IN ALVA

412 SUPPORTERS

600 GOAL

If you are a concerned resident or worker in Alva, North Olga, Babcock Ranch or North Fort Myers, Florida, please sign this petition and help Fight For The Light!

Sign the petition on here or FACEBOOK now:

www.thepetitionsite.com/960/363/539/fight-for-the-light-at-sr31-and-sr78/

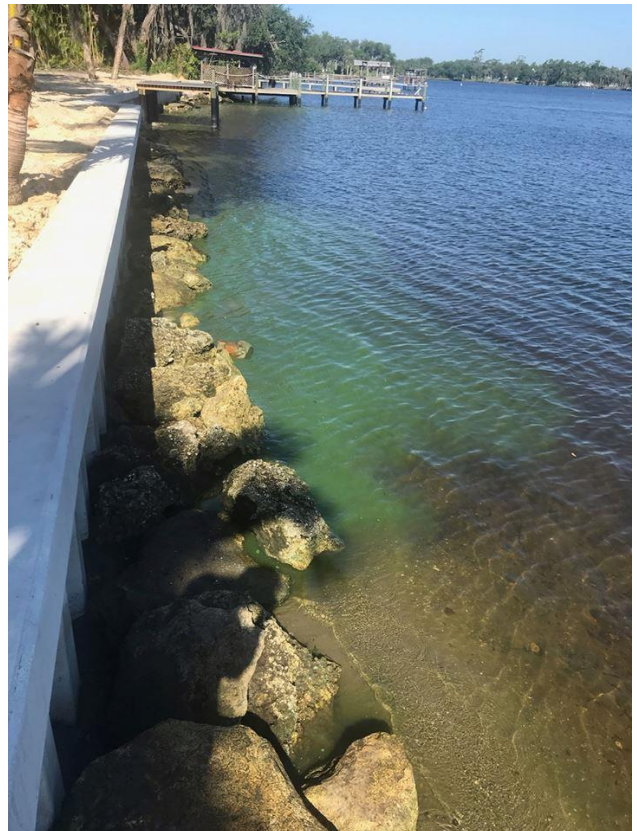
Or call for information: Sue Bisplinghoff, 239 980 2470 _____



www.calusawaterkeeper.org

Calusa Waterkeeper is a non-profit organization dedicated to the protection of the Caloosahatchee River & Estuary in Southwest Florida. This includes Lake Okeechobee, Nicodemus Slough, Charlotte Harbor, Estero Bay, plus the near-shore waters of Lee County and their watersheds. We strive to achieve this mission through education and promotion of responsible use and enjoyment by all people.

More reports of small cyanobacteria blooms in the upper Caloosahatchee estuary. Rising water temperature may be contributing. Those recreating in the upper estuary from SR 31 to the Franklin Lock should use caution.



Join us Thursday, May 2 for our 9th Annual Goodwill Golf Classic

4-person scramble format 18 holes with cart and hot lunch \$99 per player

Enter Promo Code: CHAMBER and receive \$10 off your player fees. Don't wait, spots are filling fast.



www.goodwillswfl.org/



Did you know Alva has a chapter of the Daughters of the American Revolution?

USS Hannah Chapter NSDAR

National Society

**Daughters of the American Revolution
| Alva, Florida**

Consider joining your local DAR Chapter

www.usshannahnsdar.org



Named for the first commissioned ship of the US Navy

Go to www.medicare.gov and search for HOSPITAL COMPARE.

When you're comparing hospitals, look for one that:

Has the best experience with your condition.

Participates in Medicare and is covered by your health plan.

Checks and improves the quality of its care.

Performs well on quality measures, including a national patient survey.

Meets your needs in terms of location.

After using Hospital Compare, talk with your health care provider to see which hospital will best meet your health care needs.



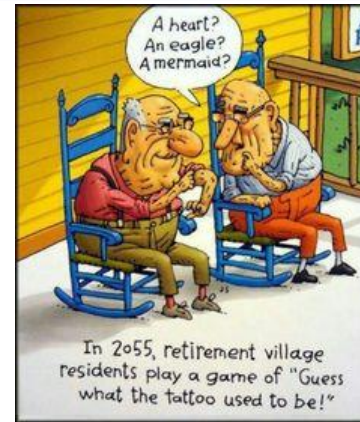


**Special
Olympics
Florida**

-Special Olympics: You are also invited to join us at our Special Olympics – Florida golf tournament on May 4th at Myerlee Country Club. So form a team, complete the attached registration form and come out and enjoy a round of golf while supporting a worthwhile cause.



Don't worry if you are not a golfer, but want to contribute we are looking for items to raffle off to our participants and always gladly accept donations. Contact Mike Calbot at MCalbot@sheriffleefl.org.



What would you like all Alva to know about next month?

Send posters, photos (jpegs only) or articles of 500 words maximum you would like to see printed or contact the editor with any questions,

Ken DeWalt, kendewalt1@gmail.com

The deadline for receipt of any material is the 15th of the month previous to the month you wish the articles to run. Issues go out before the 1st of each month.

Please understand that all articles are subject to available space and editor's approval.



SUMMER DAY CAMPS (ages 5-13) and RESIDENT CAMPS (5 nights- ages 7-17)

NOW Taking registrations!

7305 FL-78, Fort Denaud, FL 33935

(863) 675-0334



RECYCLING IN LEE COUNTY, FLORIDA

From <http://www.leegov.com/solidwaste/residential/recycling>

As of March 27, 2019

What you MUST recycle in Lee County Florida



Paper: Junk mail, newsprint, magazines, printing paper, phone books, etc. Basically, any kind of paper except shredded, waxed, metallic or soiled. (No hard cover books - donate those instead).

Metal Cans: Aluminum or steel (tin) cans, aluminum foil & disposable pans are good, too.

Cardboard: Any kind of box that doesn't have a waxed coating (such as those used to hold milk, juice and broth) Flatten it to save room in your cart

Plastic Containers: Look for the numbers 1 -7 within the recycle triangles on the bottom of the container, (no Styrofoam, no plastic bags)

Glass: Green, brown and clear bottles and jars

Do Not Recycle

Aluminum: pots and pans, cooking utensils, door screens, lawn furniture

Glass: medicine bottles, dishes, drinking glasses, windows and mirrors, cookware (such as Pyrex or Corning ware)

Metal: tools, car parts, license plates, cutlery

Paper: shredded paper, paper packaging with wax layer such as in juice boxes or waxed cardboard

Plastic: plastic bags, pool chemical bottles, motor oil and antifreeze containers, household chemical waste containers, flower pots (except black #2), medicine vials, egg cartons, polystyrene trays, newspaper sleeves, Styrofoam, Rubber, hoses, tubing, clothing, food scraps, toys



TIPS, have we got TIPS!

ALVA GARDENING: A good plant nursery (or garden center) should:



- offer a decent-sized selection of landscape plants for South Florida
- have healthy plants with competitive prices
- assist you with buying plants that are right for your situation
- help with plant identification (bring in cuttings)
- give advice on plant problems (again, bring in cuttings, but in a plastic bag)
- stock chemicals and supplies for treating pests and diseases - and the know-how on using them
- carry soil amendments

TY www.south-florida-plant-guide.com

ALVA HOMECARE: Air Conditioners are NOT scary!



Air conditioner filters need to be changed every 1 - 3 months. The best way to tell if you need to change it is to see how long it takes to turn black.

It's highly recommended that you get an ultraviolet light in your air handler to kill molds and mildew, particularly if you're allergic to them. This is an installation that costs around \$275, with cost of replacing the light bulb every year costing \$150. Beware of companies that charge up to \$1500 for the installation.

It is recommended that you keep humidity no higher than 60%. The air in my home is cool and dry, vacuuming can be a sweaty job even with the a/c on, but the humidistat will make it more comfortable.

When showering, always run bathroom fans, it's recommended that you run it for 30 minutes afterwards.

Run stove fans when boiling water and food on top of the stove.

TY www.come-to-cape-coral.com